

Pivoting Pole Banner Installation Instructions

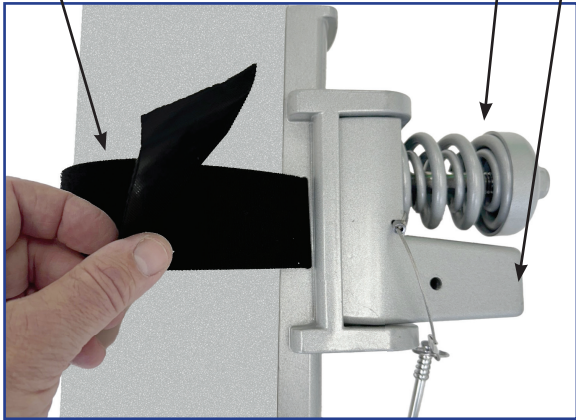
1. Position TOP unit with Spring positioned "on top, above" the pole, using included hook & loop straps. The removable hook & loop strap makes it easy to "hold" unit in place before you install the hose clamps or steel strapping.

Note: Factor in how "tall" your banner is, and for street side mounted banners, bottom of banner should be minimum 13 feet to the ground. If mounted above a sidewalk on a pedestrian or bicycle route, bottom of banner to be a minimum of 9 feet from the ground.

Hook & Loop temporary hold on pole before adding steel straps

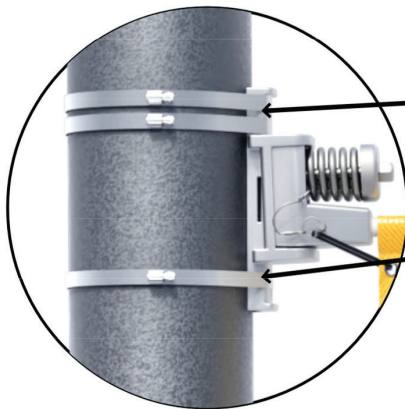
Spring on "top" mounted unit

Pole holder positioned below spring



Pre-tighten hose clamps with cordless drill and 8mm~5/16" nut driver (included) and then finish tightening with included wrench.

TOP bracket installation, spring on top (TOP bracket is installed first on pole!)

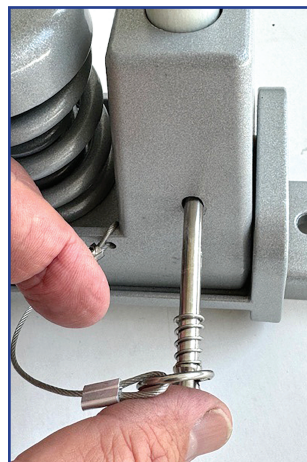


At minimum, you should install 2 straps on "outer" or spring side of the unit. This is where the most tension is on the unit. You can have 1 or 2 straps on the "inner" side.

or



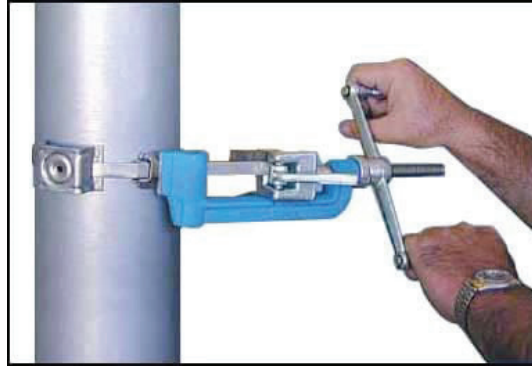
2. Insert pole through banner pocket and into top pole holder. The ball finial offers a finished look and helps retain the banner on the poles (along with the zip ties). Use spring loaded pin to hold pole in base as seen below.



Rotate up pivoting end piece on pin, line up hole on pole by rotating it until Pin goes all the way through.

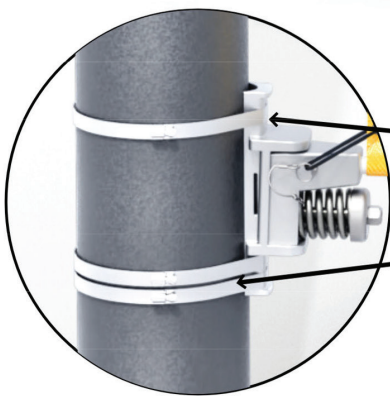
Optional:

High torque permanent SS banding systems sold separately: Tensioner Tool, 100 feet of $\frac{3}{4}$ " wide stainless steel .030 thick strapping, 30 stainless steel buckles.



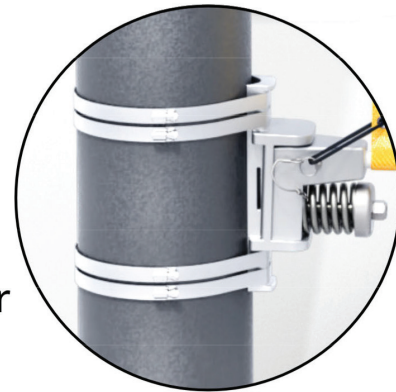
3. Now, install the bottom holder. For best tightening, install pole through bottom banner pocket, and insert pole into bottom pole holding unit. Now, slide the entire unit down the pole to get it tight as possible and use hook & loop strap to temporarily hold to street pole. Now install a minimum of 2 straps on outer or spring side of the unit and 1 or 2 on inside of the unit. Before you fully tighten the hose clamps, you can lightly tap down on the unit to tighten the banner before final tightening of the bottom unit.

Bottom bracket installation, spring on bottom

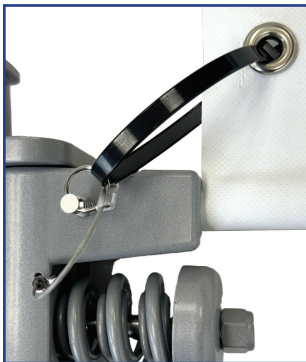


At minimum, you should install 2 straps on "outer" or spring side of the unit. This is where the most tension is on the unit. You can have 1 or 2 straps on the "inner" side.

or



4. Add zip ties on top and bottom units



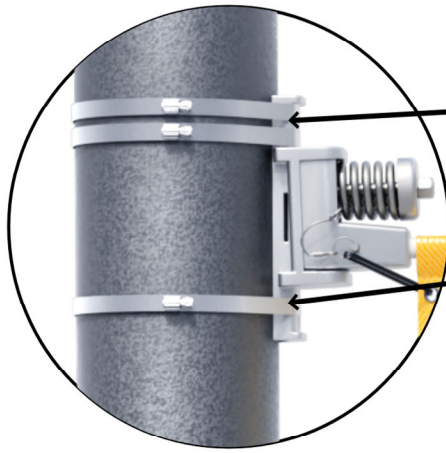
Pass zip tie through grommet hole on banner and through strong welded SS ring on pin. Clip off excess zip tie with a scissor or nail clipper. Zip tie is important to hold your banner on pole.

On the top mount, note that the spring side is on the "outer" portion **above** the pole.



On the bottom mount, note that the spring side is on the "outer" portion **below** the pole.

Pivoting Banner Pole Installation



At minimum, you should install 2 straps on "outer" or spring side of the unit. This is where the most tension is on the unit. You can have 1 or 2 straps on the "inner" side.

or

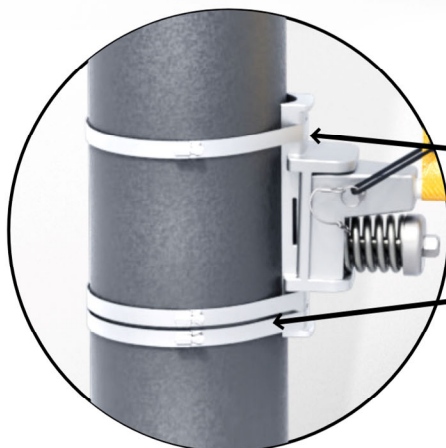


On The top mount, note that the spring side is on the "outer" portion **above** the pole

Mounting to Pole

First, band top bracket to streetlight pole, insert banner pole and hang banner at top. Before mounting bottom unit to pole, insert pole through bottom pole pocket and lock pole into bottom unit with pin. It will be "hanging." Now, strap bottom unit to pole, but before tightening straps, make sure banner is pulled down tight. Add zip ties through top and bottom grommet holes on banner and tighten around the ring on pole pin. Trim off excess zip tie ends. Note that the bottom of the banner must be 13 feet or more above the bottom of the light pole base on the street. For pedestrian light poles, 7 to 8 feet tabove grade/ sidewalk.

On The top mount, note that the spring side is on the "outer" portion **below** the pole



At minimum, you should install 2 straps on "outer" or spring side of the unit. This is where the most tension is on the unit. You can have 1 or 2 straps on the "inner" side.

or

